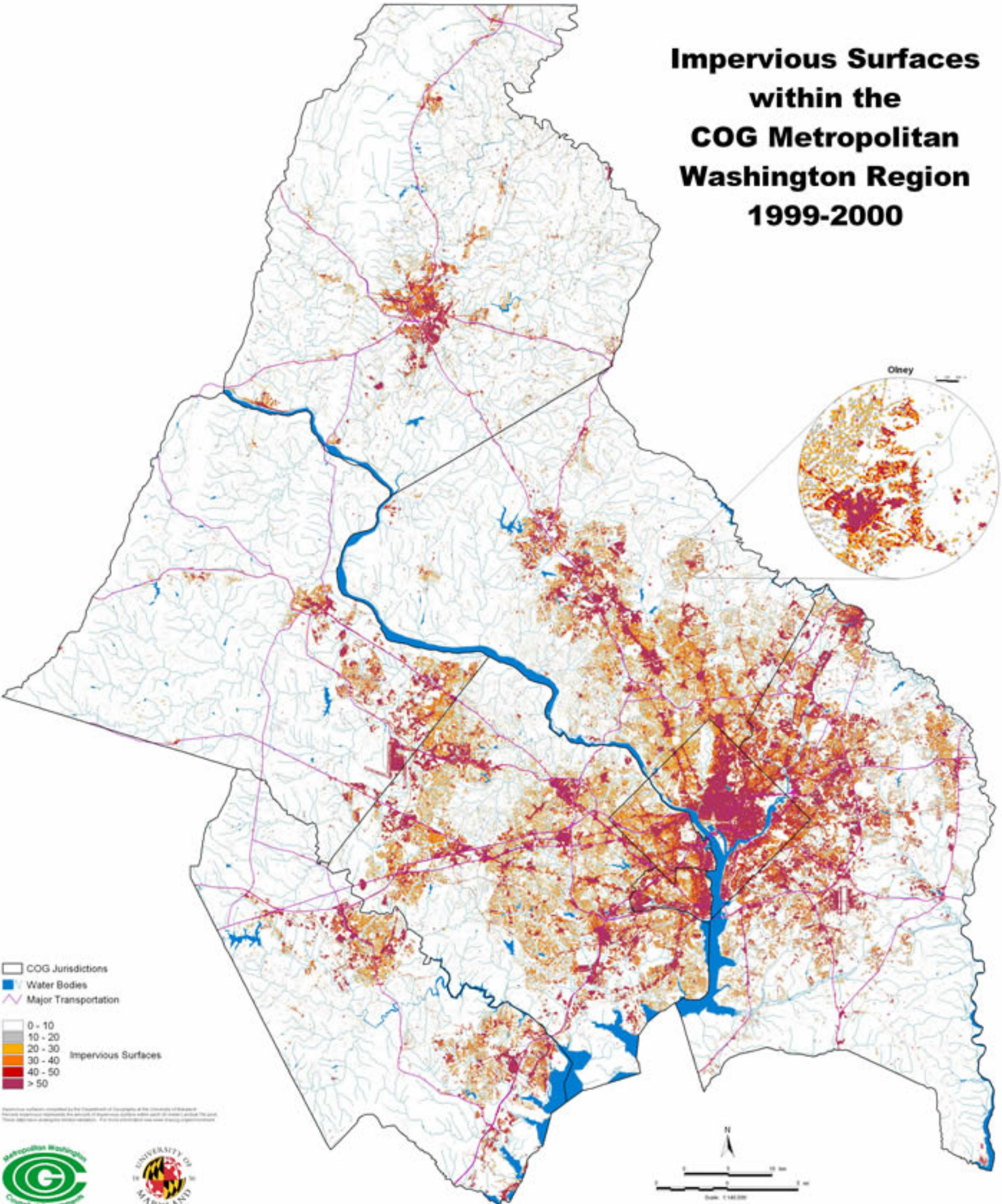


Impervious Surfaces within the COG Metropolitan Washington Region 1999-2000



COG Jurisdictions
■ Water Bodies
— Major Transportation

0 - 10
 10 - 20
 20 - 30
 30 - 40
 40 - 50
 > 50

Impervious Surfaces

Impervious surfaces identified by the Department of Geography at the University of Maryland. Accuracy assessment indicates the overall accuracy is 88% and the kappa coefficient is 0.88. The map is a reproduction of a digital data set. All other trademarks are the property of their respective owners.

